



شريككم في إقتصاد الطاقة
Your EcoEnergy partner

Does it clean stains from solar panels?



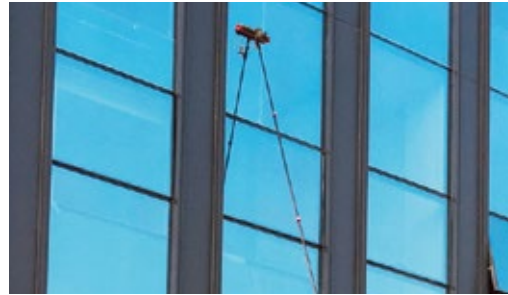
Solar Panel Cleaning Brush ■■

■ ■ General Introduction:

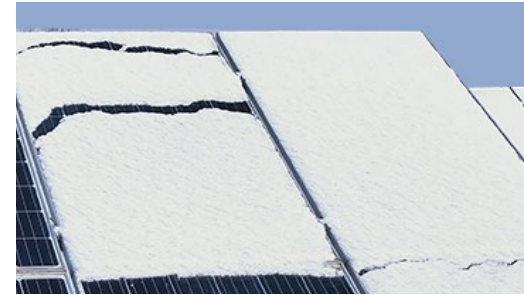
Water fed brush head, 35cm width, suitable for cleaning solar panel, exterior wall, glass window etc.



Solar panel system



Exterior glass wall



Snow scraping

Brush head is made of PP, which is treated with soft rubber around, with angle adjustment, very durable.

Handle is spliced type, easy to be installed or disassembled. The telescopic rod is a thickened all-black aluminum alloy telescopic rod. The length is: 3.6m (12FT), 5.4m (18FT), 6m (20FT), 7.2m (24FT), 9m (30FT) and 10.8m (36FT), which can support custom length;



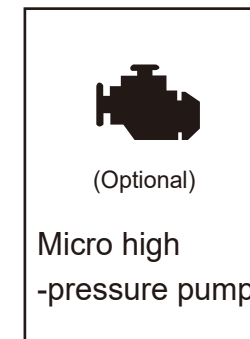
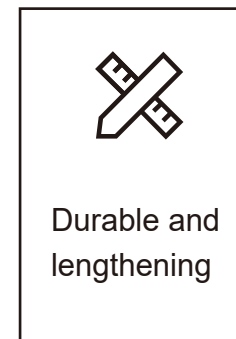
■ ■ Product Features

- Titanium alloy handle, low density, high strength & good corrosion resistance.
- Lengthened antifreeze water pipe: 20 meters plus the same length as handle.
- Y-shaped universal joint with glass blade and rubber blade, easy to disassemble.
- No ladder or stool is needed, just standing on the ground, you can easily finish cleaning, which is safe and convenient.
- The back of the brush head can be used to scrape snow and water without leaving dust.
- A brush and mop can be applied to one rod.
- Width 35cm, Rubber edging. the bristles do not fall off, the brush attached the solar panels and will not scratch the surface of the solar panels. Wide range of cleaning.

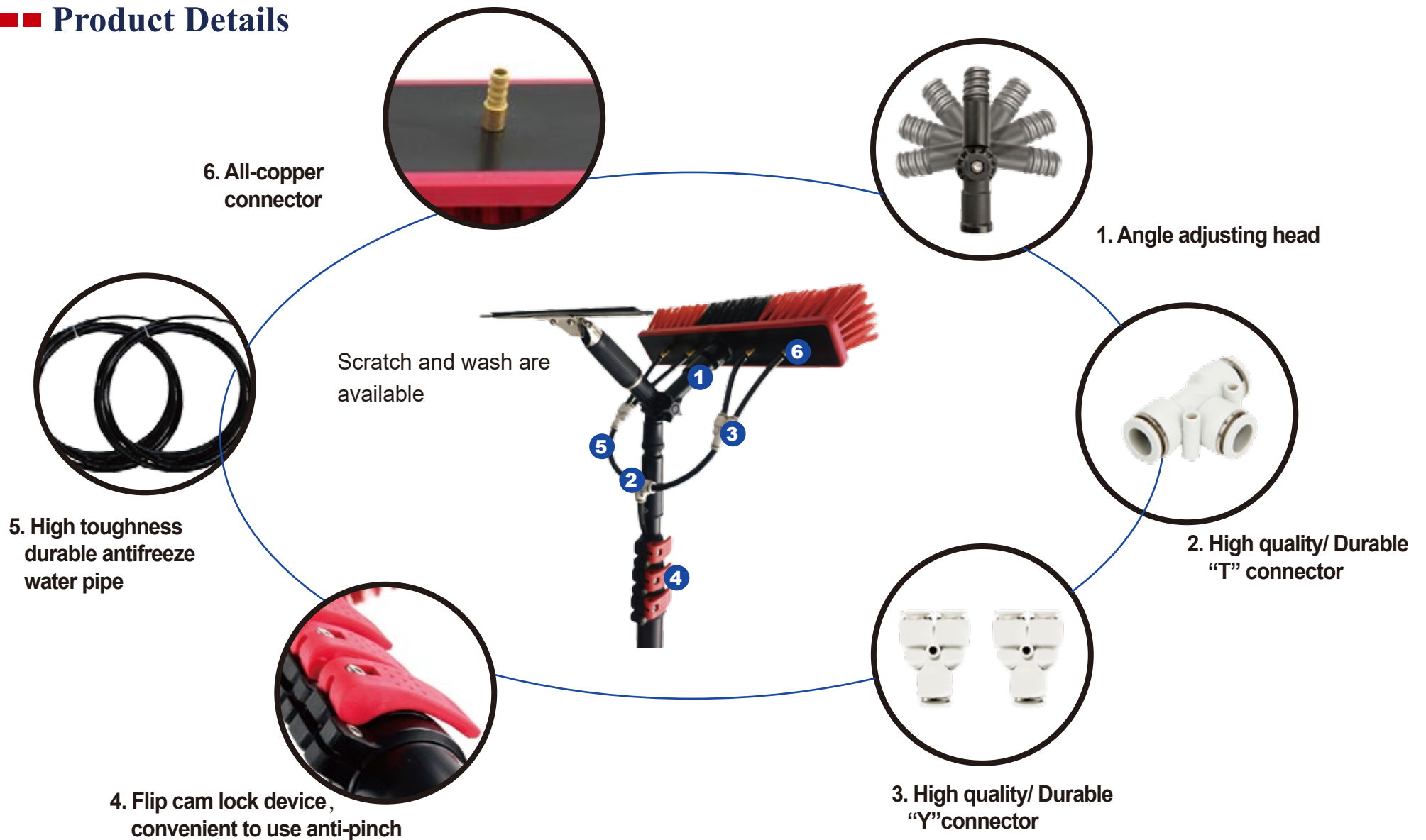


Water spray pump:

When it is inconvenient to use the tap water, a 60W water pump (optional) is equipped, and the pumping height (lift) can be more than 10m, which is convenient for working at heights.



Product Details



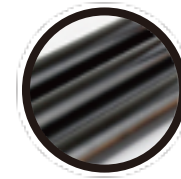
High quality telescopic pole



Aluminum pole sections
 Sections 4 to 9 Customization



Aluminum pole tube thickness
 0.8 & 1mm



Aluminum pole size:
 12FT 18FT 20FT 24FT
 30FT 36FT 42FT 45FT



Carbon fiber pole size:
 30FT 36FT 42FT 45FT
 42FT 48FT 54FT 60FT
 65FT



Carbon fiber pole sections
 Sections 4 to 9 Customization



Carbon fiber pole tube thickness
 0.8 & 1mm



The wall of the tube is smooth and has a good texture.
 Sponge handle , comfortable and durable



■ ■ Technical Parameters



(Optional)

Brush head		bristles	
size	350mm	size	2.8in / width 70mm
Material Science	Rubber edging		3.9in / length 100mm
		Material Science	made of PP
Telescopic rod			
Size	3.6M(4 section)	Pipe diameter	25/29/32/36mm
	5.4M(4 section)		
	6M(4 section)		
	7.2M(4 section)		25/29/32/36/40mm
	9M(5 section)		
	11M(5 section)		
	12.8M(6 section)		
	14.6M(7 section)		
	16.5M(8 section)		
	18.3M(9 section)		
		25/29/32/36/40/44mm	
		25/29/32/36/40/44/48mm	
		25/29/32/36/40/44/48/52mm	
		21.4/25/29/32/36/40/44/48/52mm	
<p>REMARKS:The telescopic rod is selected according to the product distance you need to clean, and customized according to the data sheet</p>			